

Soft Flex

Copper Serenity Bracelet

Designed by: **Jamie Hogsett**

Skill Level: **Beginner**

Finished Size: **8"**



Materials

Trios™ Serenity wire set
(Bone, Fluorite, Green Turquoise)

15mm Copper Toggle Clasp - 1 clasp set

2mm x 2mm Copper Crimp Tubes - 18 crimps

3mm Copper Crimp Covers - 18 crimp covers

Oval and Round Textured Copper Chain - 7 inches

Tools

Bead Crimping Pliers

Cutters

Instructions

Step 1: Cut 7" of chain, making sure the chain begins and ends with round links.

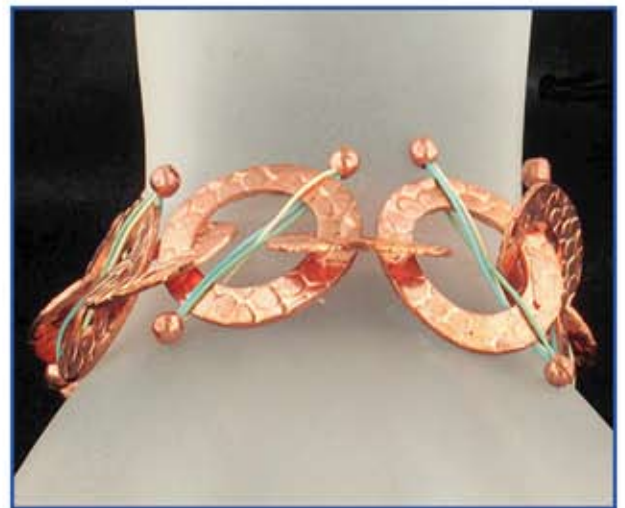
Step 2: Cut eight 2" pieces of Bone wire. Cut eight 2" pieces of Fluorite wire. Cut eight 2" pieces of Green Turquoise wire.

Step 3: Use 1 piece of each color wire to string 1 crimp tube to the very end of the wires. Crimp the tube and cover with a crimp cover.

Step 4: Place the crimped end of the wires against the outside edge of 1 round chain link, with two wires on one side of the link and one wire on the other side of the link. Pass the wires through the center of the link so that the two strands crisscross with the single strand in the center of the link. Gather the three wire strands together on the other edge of the link and use all three strands to string 1 crimp tube. Crimp the tube and trim excess wire. Cover the tube with a crimp cover.

Step 5: Repeat Steps 3 and 4 seven times (once for each round link).

Step 6: Use 2" of Green turquoise wire to string 1 crimp tube to the center of the wire. Use one end of the wire to string one of the end links of the chain, and then pass back through the tube. Use the other end of the wire to string one half of the toggle clasp, and then pass back through the tube. Snug the wire and crimp. Trim the wire ends and cover with a crimp cover. Repeat entire step for the other end of the bracelet, using the other half of the toggle clasp.



Projects not intended for children under the age of 13.

The information on this instruction sheet is presented in good faith, but no warranty is given, nor results guaranteed.

Soft Flex® Company disclaims all liability from any injury to anyone undertaking the construction of this project as a result of improper safety precautions.